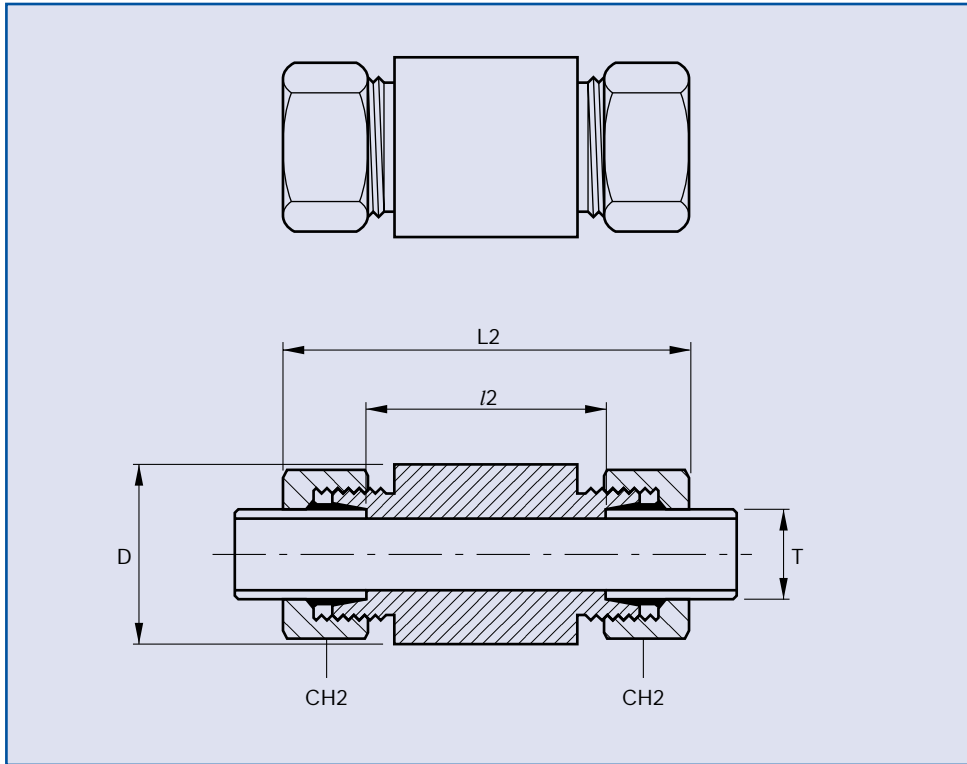


# METRIC WELDING BULKHEADS



WELDING BULKHEADS

Series	NP	ØT	Part N°	CH2	L2	l2	D
L	315	6	MWBH6L	14	85	56	18
L	315	8	MWBH8L	17	85	56	20
L	315	10	MWBH10L	19	87	58	22
L	315	12	MWBH12L	22	87	58	25
L	315	15	MWBH15L	27	100	70	28
L	315	18	MWBH18L	32	101	69	32
L	160	22	MWBH22L	36	105	73	36
L	160	28	MWBH28L	41	106	73	40
L	160	35	MWBH35L	50	114	71	50
L	160	42	MWBH42L	60	115	70	60
S	630	6	MWBH6	17	89	60	20
S	630	8	MWBH8	19	89	60	22
S	630	10	MWBH10	22	91	59	25
S	630	12	MWBH12	24	91	59	28
S	630	14	MWBH14	27	107	72	30
S	400	16	MWBH16	30	107	71	35
S	400	20	MWBH20	36	114	71	38
S	400	25	MWBH25	46	120	72	45
S	400	30	MWBH30	50	126	73	50
S	315	38	MWBH38	60	133	72	60

Part numbers indicated are for **Carbon Steel Couplings** only.  
For **316 Stainless Steel Couplings**, add suffix **SS** to part number.