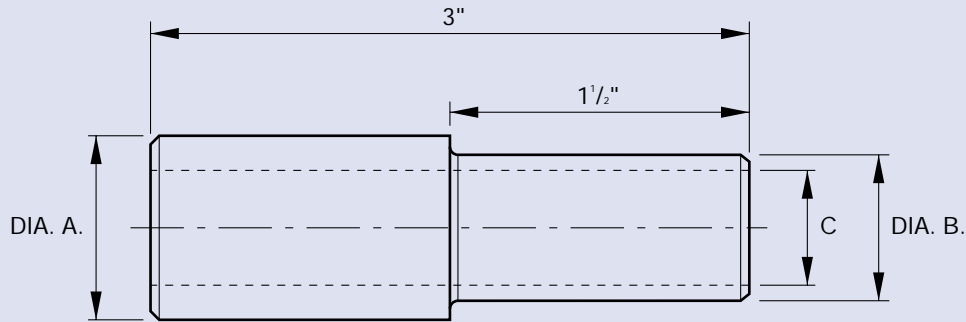


# IMPERIAL REDUCING STANDPIPES

FOR O.D. & N.B. FITTINGS

BETABITE  
HYDRAULICS



## O.D. TUBES

Part No.	Dia. A.	Dia. B.	C.
RS6-4	3/8"	1/4"	1/8"
RS8-4	1/2"	1/4"	1/8"
RS8-6	1/2"	3/8"	1/4"
RS10-6	5/8"	3/8"	1/4"
RS10-8	5/8"	1/2"	3/8"
RS12-6	3/4"	3/8"	1/4"
RS12-8	3/4"	1/2"	3/8"
RS12-10	3/4"	5/8"	15/32"
RS14-8	7/8"	1/2"	3/8"
RS14-10	7/8"	5/8"	19/32"
RS14-12	7/8"	3/4"	19/32"
RS16-8	1"	1/2"	3/8"
RS16-12	1"	3/4"	19/32"
RS16-14	1"	7/8"	23/32"
RS20-12	1 1/4"	3/4"	19/32"
RS20-14	1 1/4"	7/8"	23/32"
RS20-16	1 1/4"	1"	27/32"
RS24-12	1 1/2"	3/4"	19/32"
RS24-16	1 1/2"	1"	27/32"
RS24-20	1 1/2"	1 1/4"	1 1/16"

## N.B. TUBES

Part No.	Nominal Bore Tube Sizes		Dia. A.	Dia. B.	C.
NRS6-4	3/8"	1/4"	.685" / .675"	.540" / .530"	11/32"
NRS8-4	1/2"	1/4"	.849" / .839"	.540" / .530"	11/32"
NRS8-6	1/2"	3/8"	.849" / .839"	.685" / .675"	15/32"
NRS12-6	3/4"	3/8"	1.065" / 1.055"	.685" / .675"	15/32"
NRS12-8	1"	1/2"	1.065" / 1.055"	.849" / .839"	39/64"
NRS16-8	1"	1/2"	1.341" / 1.331"	.849" / .839"	39/64"
NRS16-12	1"	3/4"	1.341" / 1.331"	1.065" / 1.055"	51/64"
NRS20-12	1 1/4"	3/4"	1.682" / 1.672"	1.065" / 1.055"	1 1/32"
NRS20-16	1 1/4"	1"	1.682" / 1.672"	1.341" / 1.331"	1 1/32"
NRS24-16	1 1/2"	1"	1.914" / 1.904"	1.341" / 1.331"	1 1/32"
NRS24-20	1 1/2"	1 1/4"	1.914" / 1.904"	1.682" / 1.672"	1 11/32"

Alternatively supplied fitted with nut and ferrule on each end, at extra cost.

Part numbers indicated are for **Carbon Steel Couplings** only.

For **316 Stainless Steel Couplings**, add suffix **SS** to part number.